

Year 1: Autumn 1 Relationships

Families and Friendships



Key Vocabulary

- Relationships
- Parents
- Role
- Family
- Same sex
- Worry
- Difference



Objectives

- Identify roles of different people - what role do these different people play in children's lives and how do they care for them.
- To understand what it means to be a family and how families are different, e.g. single parents, same-sex parents, etc
- To know the role these different people play in children's lives and how they care for them.
- To realise the importance of telling someone — and how to tell them — if they are worried about something in their family.

Key Resources

<https://www.pshe-association.org.uk/curriculum-and-resources/resources/medway-public-health-directorate-relationships-and>

<https://www.pshe-association.org.uk/metro-charity>

Year 2: Autumn 1 Relationships

Making friends and recognising hurtful behaviour



Key Vocabulary

- Friend
- Positivity
- Resolve
- Lonely
- Argument
- Lonely
- Unhappy



Objectives

- To identify how to be a good friend, e.g. kindness, listening, honesty.
- To describe different ways that people meet and make friends.
- To choose strategies for positive play with friends, e.g. joining in, including others
- To identify what causes arguments between friends and how to positively resolve arguments between friends.
- To recognise, and ask for help, when they are feeling lonely or unhappy or to help someone else.

Key Resources

<https://www.pshe-association.org.uk/curriculum-and-resources/resources/1decision-primary-pshe-education-programme>

Year 3: Autumn 1 Relationships



What makes a family? Personal boundaries - impact of behaviour.

Objectives

- To recognise and respect that there are different types of families, including single parents, same-sex parents, step-parents, blended families, foster and adoptive parents • that being part of a family provides support, stability and love.
- To identify the positive aspects of being part of a family, such as spending time together and caring for each other
 - To recognise the different ways that people can care for each other e.g. giving encouragement or support in times of difficulty.
 - To identify if/when something in a family might make someone upset or worried
 - what to do and whom to tell if family relationships are making them feel unhappy or unsafe.
- To understand is appropriate to share with friends, classmates, family and wider social groups including online
- To explain what privacy and personal boundaries are, including online.
- To know whom to tell if they see or experience bullying or hurtful behaviour.

Key Vocabulary

- Respect
- Families
- Same sex
- Positivity
- Support
- Relationships
- Appropriate
- Online
- Privacy
- Bullying



Key Resources

<https://www.pshe-association.org.uk/barnardos>

<https://www.pshe-association.org.uk/curriculum-and-resources/resources/adoptables-schools-toolkit-coram-life-education>

Year 4: Autumn 1 Relationships

Positive friendships and responding to hurtful behaviour



Key Vocabulary

- Trust
- Excluded
- Teasing
- Playful
- Dares
- Confidence
- Secret
- Behaviour

Objectives

- To recognise the features of positive healthy friendships such as mutual respect, trust and sharing interests • strategies to build positive friendships
- To identify how to seek support with relationships if they feel lonely or excluded
- To communicate respectfully with friends when using digital devices
- To differentiate between playful teasing, hurtful behaviour and bullying, including online • how to respond if they witness or experience hurtful behaviour or bullying, including online
- To recognise the difference between 'playful dares' and dares which put someone under pressure, at risk, or make them feel uncomfortable
- To recognise when it is right to keep or break a confidence or share a secret
- To understand that people may behave differently online including pretending to be someone they are not and how to report concerns and seek help if worried or uncomfortable about someone's behaviour, including online

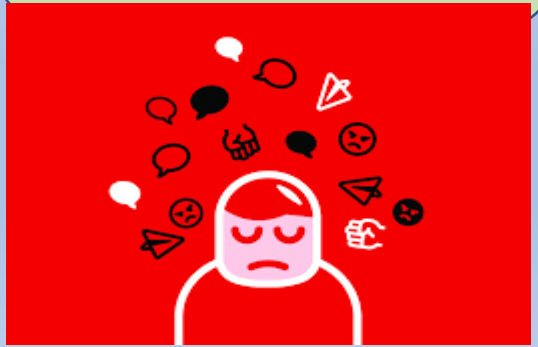
Key Resources

<https://www.pshe-association.org.uk/curriculum-and-resources/resources/nspcc-share-aware-resources>

<https://www.pshe-association.org.uk/curriculum-and-resources/resources/google-and-parent-zone-ks2-internet-safety>

<https://www.pshe-association.org.uk/curriculum-and-resources/resources/google-and-parent-zone-ks2-internet-safety>

<https://www.pshe-association.org.uk/curriculum-and-resources/resources/1decision-primary-pshe-education-programme>



Year 6: Autumn 1 Relationships

Attraction to others

Recognising and managing pressure



Key Vocabulary

- Attraction
- Gender
- Ethnicity
- Faith
- Civil partnership
- Illegal
- Pressure
- Challenged
- Uncomfortable
- Consent



Objectives

- To recognise what it means to be attracted to someone and different kinds of loving relationships
- To understand people who love each other can be of any gender, ethnicity or faith
- To understand the difference between gender identity and sexual orientation and everyone's right to be loved
- To explore the qualities of healthy relationships that help individuals flourish
- To explore marriage and civil partnership mean e.g. a legal declaration of commitment made by two adults and that people have the right to choose whom they marry or whether to get married and that to force anyone into marriage is illegal. Also how and where to report forced marriage or ask for help if they are worried
- To compare the features of a healthy and unhealthy friendship
- To explore and discuss the shared responsibility, if someone is put under pressure to do something dangerous and something goes wrong
- To know strategies to respond to pressure from friends including online and how to assess the risk of different online 'challenges' and 'dares'
- To recognise and respond to pressure from others to do something unsafe or that makes them feel worried or uncomfortable and how to get advice and report concerns about personal safety, including online
- To explore what consent means and how to seek and give/not give permission in different situations

Key Resources

<https://www.pshe-association.org.uk/curriculum-and-resources/resources/medway-public-health-directorate-relationships-and>

<https://www.pshe-association.org.uk/curriculum-and-resources/resources/nspcc-share-aware-resources>

<https://www.pshe-association.org.uk/curriculum-and-resources/resources/play-share>