

RETURNING TO SCHOOL GUIDE



YEAR II

Your Timetable:

Start Time	Lesson 1	Lesson 2	Break	Lesson 3	Lesson 4	Lunch	Lesson 5	Finish
8.40am	8.50 – 9.50	9.50 – 10.50	10.50 – 11.05	11.05 – 12.05	12.05 – 1.05	1.05 – 1.35	1.35 - 2.40	2.40 pm



You will arrive at school for 8.40am and enter the school building by the entrance at the top of the car parks, by PE.

Please enter the building via the doors by Mr Critchley's office.



Once you are in the school building, you will go along the main first floor balcony to the Maths wing. Please enter through the left hand doors.

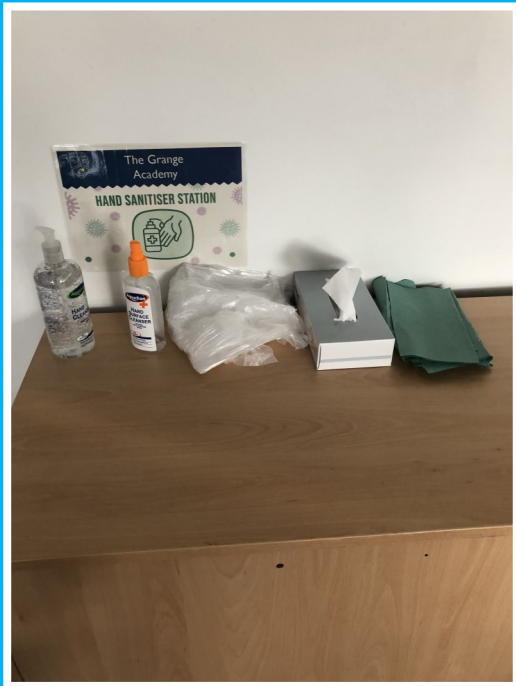


RETURNING TO SCHOOL GUIDE



YEAR II

Lessons



As you enter each classroom you will be asked to sanitise your hands.

There is a station set up in each classroom to enable you to do this.

It is really important that you bring your own equipment with you because you will not be able to share equipment.

You must stay in the Maths wing. You will not be allowed to move around to other classrooms in the school. All of your lessons will take place within the Maths wing.



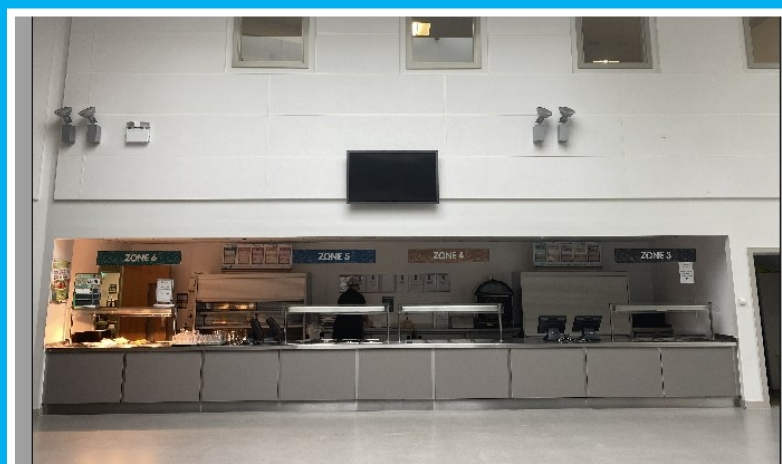
RETURNING TO SCHOOL GUIDE



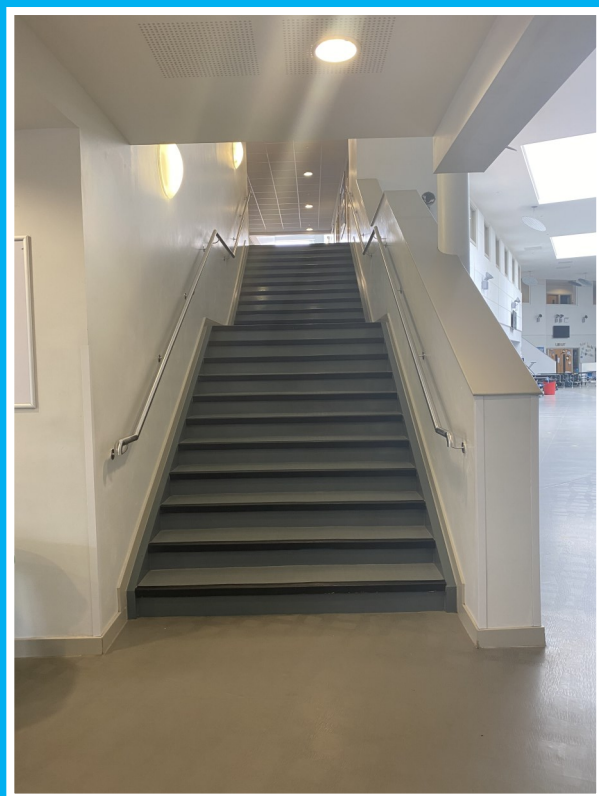
YEAR II

Break and Lunch

At break and lunch time you will get your food from the secondary servery. Don't worry both serveries will serve exactly the same food.



If you would like to go outside at break or lunch, you may go to the top yard. You must gain access to this via the main stairs and via the doors by Mr Critchley's office.



RETURNING TO SCHOOL GUIDE



YEAR II

Break and Lunch



**Once you're outside,
Year I I will have sole
use of the top yard**

**After break, and lunch you
will re-enter the building via
the doors by Mr Critchley's
Office before returning, by
the main balcony walkway,
to the Maths wing.
As before, please enter via
the left hand doors.**



RETURNING TO SCHOOL GUIDE



YEAR II

End of the School Day



After your lessons finish for the day, you'll leave the Maths wing and will make your way back along the main corridor towards the doors by Mr Critchley's office.

You will collect your mobile phone from the doors outside of Mr Critchley's office.

You will leave the school via the entrance that you used, the PE gates, leading to the carpark.

