



THE  
GRANGE  
ACADEMY

ASPIRE FOR EXCELLENCE

# NEWSLETTER

MARCH 2022 ISSUE 09

## CAR PARKING AND ROAD SAFETY

As our car park gets extremely busy during drop off and pick up times, we ask parents/carers/visitors to ensure that they do not block in or obstruct other vehicles and do not park on the zig-zag markings on Latham Avenue.

Disabled bays are allocated for parents/students who have limited mobility and must display a blue badge.

Please be observant of pedestrians and also remind children of the importance of road safety - using zebra crossings correctly, checking before they cross the road etc. We appreciate your support in keeping all members of our community safe.



### A MESSAGE FROM THE PRINCIPAL

Dear Parents and Carers

As you will see this is an action packed edition and contains lots of the amazing work and highlights the range of opportunities available to students at The Grange Academy. Again, we are delighted to have a such a big intake arriving in Year 7 for September 2022. This further supports our belief that we are now quickly becoming the school of choice for so many families. We have over 90% of our current Year 6 students joining us in September and I look forward to continuing to work with you and them in the future.

In another piece of positive news; as you are aware, we had a review from Challenge Partners recently, which is our third review since I started here in September 2018. It takes place over three days and it was led by a current lead OfSTED inspector and five other senior leaders from across the county; three who are headteachers. They meet with a range of staff, students and review lessons and books. Additionally, they look at the curriculum we provide and also the opportunities the students receive. The review went exceptionally well and the full report can be found on our website under the Academy Information tab and then the Ofsted tab. There are many positive features in the report which found us to be 'effective' in all areas. I am exceptionally proud of the report which is due to all the hard work and dedication of the staff, students and your support.

I would also like to thank you for your generosity in supporting our collection for Ukrainian families. My assemblies in the secondary phase last week, touched on the current conflict and I know students across the phases have been discussing the on-going war to support their understanding. If you feel that your child(ren) need any additional support to help them then please contact their class teacher or personal tutor.

You will also note that on this front page, we are reminding students to take extra care when walking to and from school and also whilst riding their bikes. I would urge you, as parents and carers, to reinforce this message to keep our students safe. Additionally, can I ask for your cooperation, again, in ensuring the parking bays are used appropriately in our car park; especially the small one closest to school. These should be reserved for taxi's and disabled badge holders only. I do not want any of our vulnerable students being hurt by a car due to how busy this area can become.

Finally, we have lots of trips and visits coming up as we continue to get back to normality. I know how grateful the staff and students are to be able to have this opportunity again.

Best wishes

Mr Ian Critchley  
Principal



MEMBER OF THE  
WADE DEACON TRUST

# SUBJECT IN THE SPOTLIGHT:

## PHYSICAL EDUCATION (PRIMARY)

This year in Primary PE, Nursery to Year 6 students have undertaken a wide variety of activities ranging from Fundamental Movement skills in EYFS to Ball Skills, Gymnastics, Dance and Team Games in Key Stage 1.

In Key Stage 2, year 3 and 4 students have undertaken Indoor Athletics, Football, Tag Rugby, Basketball, Gymnastics, Dance, Hockey and Judo. Through dance, the children have begun to develop their self and peer assessment skills through the use of iPad's as well as measuring and recording linked to Maths in Athletics.

In Year 5 and 6, students have undertaken Indoor Athletics, Football, Tag Rugby, Dance, Gymnastics, Hockey, Netball and Basketball. They are using their skills gained in Year 3 and 4 to enhance their group work in Gymnastics and Dance as well as cooperation skills in team games.

The children regularly take part in the 'Daily Mile', either running or on scooters which has greatly improved our children's activity levels throughout the day.





# SUBJECT IN THE SPOTLIGHT:

## PHYSICAL EDUCATION (SECONDARY)

During last half term our secondary students undertook a range of activities in PE that included hockey, rugby, badminton and fitness.

We believe that it is important that the students have the opportunity to participate in a broad range of activities, so that they can experience new things and develop their understanding of different skills.

In our fitness lessons we focussed on the benefits of exercise and how activity has a positive affect on our overall health, muscles and vital organs, like our heart and lungs.

This half term the students are participating in gymnastics, table tennis, handball and basketball, exposing students to games that develop hand-eye co-ordination and also an awareness of how the body moves in terms of core strength, balance and flexibility.

After school clubs are ongoing and we encourage students to attend our enrichment opportunities. Currently we are offering:

- Year 7 Football/Key Stage 3 Netball on Mondays
- Year 7 Rugby/ Key Stage 3 Table Tennis on Tuesdays
- Year 8/Year 9 Football/Key Stage 3 Basketball on Wednesdays

Thank you for your support of PE at The Grange Academy.







## YEAR 7 BASKETBALL

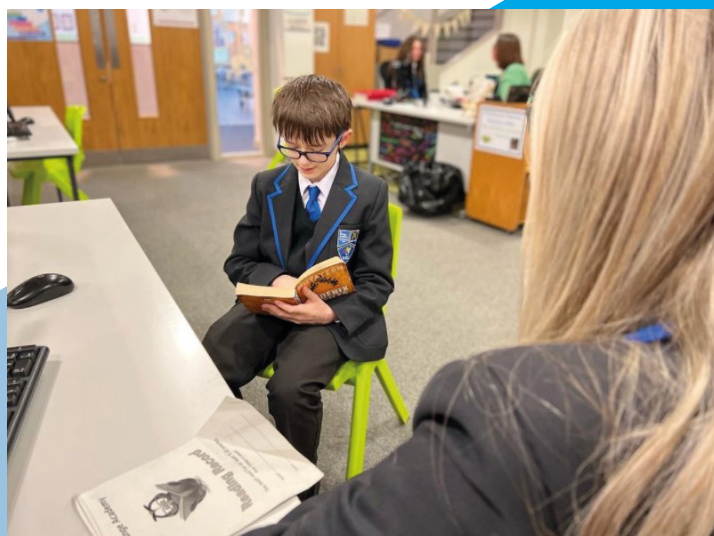
On Wednesday 16th February, our Year 7 Basketball team took on Sandymoor in what was their first ever match. Each team member played brilliantly and came away with a 12-10 win. Congratulations to them all for their hard work and team spirit.

## READING BUDDIES

This term our Reading Buddies has begun and has been a big success.

The scheme enables our students across primary and secondary to receive 1:1 reading time in the school library and the older students will guide and support their reading journey.

This is a wonderful opportunity to improve student's reading further.





# ENRICHMENT DAY

On Tuesday 15th February, students across both primary and secondary phases took part in our first Enrichment Day. With 50 different activities taking place throughout the day, it was an excellent opportunity for students to try something new.

We even had Animal Teach, Enrich Education, Rock Steady and Filipino Eagles Martial Arts in as external providers to support with the day.



**ROCK  
STEADY™**

**enrich**  
Education

**ANIMAL TEACH**

INSPIRE. OUR. FUTURE.

ASPIRE FOR EXCELLENCE



# HALTON PRIMARY ARTS NETWORK

This half term, the primary phase has been working extremely hard on their artwork. As a school, we took part in the Halton Primary Art Network (HPAN) exhibition.

This year's theme was 'LIGHT' and so each year group was assigned a different task. Children investigated use of pastels, tissue paper, sketching skills and charcoal to explore different interpretations of light. Some of the artwork was then displayed in the HPAN exhibition in The Shopping City, which was available for the public to visit between 14th February and Friday 4th March. I am extremely proud of the children's hard work and talent, and I hope they are proud of what they have achieved.



## CONGRATULATIONS

**Lucy, Jessica & Ashleigh are through to the Regional Finals of the 'Youth Speaks' competition**

## YOUTH SPEAKS

Congratulations to Lucy, Jessica and Ashleigh who delivered a fantastic speech on plastic pollution this afternoon, to earn their way into the regional finals of the Rotary Club's 'Youth Speaks' competition on the 4th March.

The girls have shown great confidence as well as oracy skills and public speaking.



## WORD OF THE WEEK

Each week, we look at a high-frequency, useful word (which may be difficult to interpret) and explore the definition, sounds, spelling, word-families, grammar and history surrounding it.

### How you can help:

Encourage the use of the word in speaking and writing; model the use of the word when you talk.

## PRIMARY

**SUBORDINATE** (adjective, verb and noun)  
lower in rank or position

**PARAGRAPH** (adjective)

- a collection of sentences. They are used in writing to introduce new sections of a story, characters or pieces of information.

## SECONDARY

## CHALLENGE

A call to someone to participate in a competitive situation

Synonyms:

Dare/ Provocation/ Summons/ Ultimatum

## EMOJI BOOKS

Can you guess the name of this well known children's book from these emojis?



## COLLECTION FOR UKRAINE

Our Cross-Phase Student Leadership Teams have been organising a collection throughout the week, in support of the Ukrainian Humanitarian Crisis. There will be a number of collection points set up within school, including in the main foyer area.

## SUGGESTED ITEMS

SUPPORT  
AT THE  
GRANGE  
ACADEMY

BLANKETS

SLEEPING BAGS

FIRST AID SUPPLIES (PLASTERS, BANDAGES ETC)

NAPPIES

WET WIPES

TOILETRIES (TOOTHPASTE, SOAP, SHOWER GEL ETC)

TINNED / PACKET FOOD

BABY FOOD / FORMULA

PET FOOD

THERMAL SOCKS / UNDERWEAR





## Career of the week

### Carpenter



#### Entry requirements:

- Employers usually look for some on-site experience and qualifications. You could start as a joiner's 'mate' or labourer to get site experience. Once working, your employer may offer you training on the job.
- You could take a college course in carpentry and joinery to gain some of the knowledge and practical skills needed to improve your chances of finding work in the industry.
- You could get into this job through an apprenticeship.
- You'll need a Construction Skills Certification Scheme (CSCS) card to work on a building site.
- Go Construct has more information about building careers and training.

#### Skills required:

- to be able to follow technical drawings and plans
- maths skills to calculate quantities and angles
- the ability to pay close attention to detail and make accurate measurements

#### Salary:

Starter: £16,000 to £24,000

Experienced: £25,000 to £40,000

Overtime and extra shift pay may increase your income. Self-employed carpenters and joiners set their own rates.

#### What you'll do:

- You'll work as an employee or a self-employed contractor for large and small construction companies. You may work on a construction site, a client's premises, or in your own workshop.
- Depending on where you work, your day-to-day tasks may include:
  - discussing plans and following instructions
  - cutting and shaping timber for floorboards, doors, skirting boards and window frames
  - making and fitting wooden structures like staircases, door frames, roof timbers and partition walls
  - making and assembling fitted and free-standing furniture
  - installing kitchens, cupboards and shelving
  - building temporary wooden supports to hold setting concrete in place (shuttering)
  - making and fitting interiors in shops, bars, restaurants, offices and public buildings
  - constructing stage sets for theatre, film and TV productions



# SAFEGUARDING, EMOTIONAL WELLBEING AND MENTAL HEALTH

Are you familiar with the 'We are with you' service? Below are some 'Top Tips' to give an idea of the service provision and information for parents/carers and professionals to support children (at risk of) going missing from home.

## Missing From Home Service

Providing intervention & support to young people who have been reported as missing from home in Pan Cheshire.

**we are  
withyou**  
in PAN Cheshire

### We are With You in Pan Cheshire

We Are With You are commissioned by the Pan Cheshire Local Authorities to provide a service to young people who are reported missing from home. This includes completing Return Home Interviews and completing one to one work with young people who are at risk due to being reported missing.

[wearewithyou.org.uk](http://wearewithyou.org.uk)

### Get in touch

#### Follow us on social media

Message us on one of our pages and a member of our team will get back to you

#### Facebook

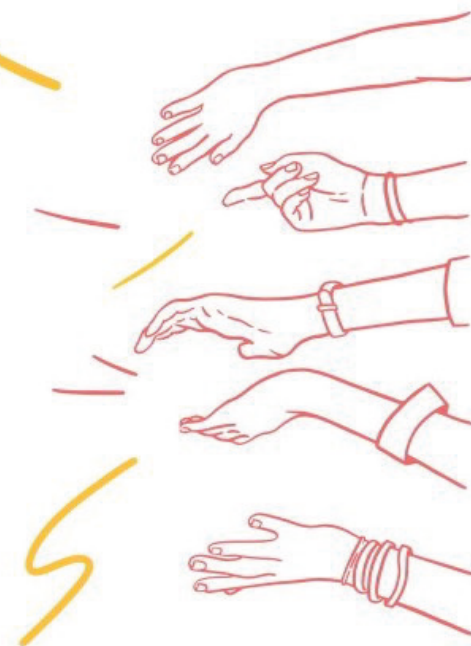
Pan Cheshire Missing From Home Service

#### Twitter

@PanCheshireMFH

#### Instagram

wearewithyoupancheshire



# SAFEGUARDING, EMOTIONAL WELLBEING AND MENTAL HEALTH

## What we offer

Our service completes Return Home Interviews with all children and young people reported as missing from home or care.

Our service can complete one to one sessions with young people who have been reported missing, supporting them to understand the risks and make positive changes.

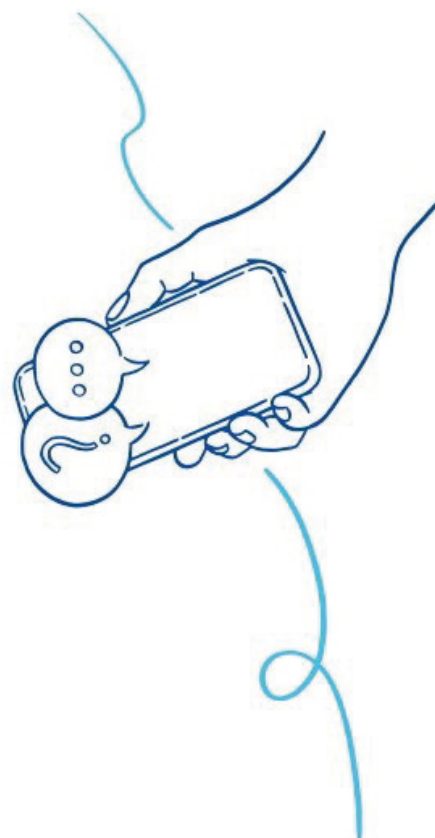
Additionally the service can support parents and professionals across Pan Cheshire to offer a collaborative approach to help those at risk due to being reported missing.

## Talk to us online

Whether you need information for yourself or advice to support a friend or relative our webchat service is here for everyone.

Start a webchat by clicking on the chat button on the bottom right hand side of our website. You can access webchat on your laptop or mobile.

We've used our webchat service to speak to over 11,000 people in need



**need  
to talk?  
we are  
with you**

© WE ARE WITH YOU LIMITED. We're a registered charity in England (1001957) and Scotland (SC040009). We're a registered company in England and Wales (2580377). Registered address: Gate House, 1-3 St. John's Square, London, England, EC1M 4DH

## What is a Return Home Interview?

The purpose of a Return Home Interview is to give the child who has returned a chance to talk about their lives holistically, exploring why they ran away (push and/or pull factors), what happened whilst they were missing and how they are feeling now they are back.

The interview is an opportunity for children or young people to speak to a professional who can provide appropriate follow up with referrals or signposting for any of the risks identified.

## When to report a child as missing?

The police are entitled to expect parents and carers to accept normal parenting responsibilities and undertake reasonable actions to try and establish the whereabouts of the individual. These include:

- Make attempts to contact them
- Call friends or family
- Visiting areas they frequent
- Visit place known to be attending (for example friend's house or party)
- Checking to see if any items are missing from the home

Once those inquiries have been completed, it may be appropriate to record the child as missing and take actions set out in national police guidance.



# VACANCIES

## TEACHER OF MATHEMATICS

**Salary**

MPS / UPS (£25,714 - £41,604)

**Employment type**

Full time

**Contract Type**

Permanent

**Closing date for applications**

Friday 25th March at 9am

**Send applications to**

hr@thegrangeacademy.co.uk

**Interview Date**

31st March 2022

**Start Date**

1st September 2022

## TEACHER OF HISTORY

**Salary**

MPS/UPS (£25,714 - £41,604)

**Employment type**

Full time

**Contract Type**

Permanent

**Closing date for applications**

Friday 18th March 2022 at 9am

**Send applications to**

hr@thegrangeacademy.co.uk

**Interview Date**

24th March 2022

**Start Date**

1st September 2022

## TEACHER OF SCIENCE

**Salary**

MPS/UPS (£25,714 - £41,604)

**Employment type**

Full time

**Contract Type**

Permanent

**Closing date for applications**

Friday 25th March 2022 at 9am

**Send applications to**

hr@thegrangeacademy.co.uk

**Interview Date**

29th March 2022

**Start Date**

1st September 2022

## TEACHER OF MFL

**Salary**

MPS/UPS (£25,714 - £41,604)

**Employment type**

Full time

**Contract Type**

Permanent

**Closing date for applications**

Tuesday 19th April 2022 at 9am

**Send applications to**

hr@thegrangeacademy.co.uk

**Interview Date**

27th April 2022

**Start Date**

1st September 2022

## CASUAL EXAM INVIGILATORS

For more information and to receive an application pack, please contact school on 01928 562660 or visit our website [www.thegrangeacademy.co.uk](http://www.thegrangeacademy.co.uk)

Applicants will be required to fill in an application form as well as a supplementary information form.