



NEWSLETTER

NOVEMBER 2021 ISSUE 05

ATTENDANCE

Attendance Winners – Week (Weekly Winners)

Congratulations to

Best attending Year Primary Phase		Best attending Year Secondary Phase					
Year 4		Year 10					
Best Attending							
Primary classes winners		Secondary forms winners		Primary Year Group		Secondary Year Group	
1st	Red	1st	10MNY	1st	Year 04	1st	Year 10
2nd	Orange	2nd	7GII	2nd	Year 01	2nd	Year 11
3rd	Yellow	3rd	7CMC	3rd	Reception	3rd	Year 7

ASPIRE FOR EXCELLENCE

A MESSAGE FROM THE PRINCIPAL

Dear Parents and Carers

I hope this edition of the Newsletter finds you well and in good health. In this edition you will find all the fantastic Maths work taking place in both phases and a overview of all the other opportunities our students have been making the most of recently. As Christmas approaches we are preparing for festive activities, such as outside carol concerts and reward activities. More information will be shared with you closer to the time.

In order to help and support our local community, the cross-phase Student Leadership team are asking for small donations for our Christmas Hampers. More information on what items they would like can be found in this Newsletter; your support is most appreciated. Please also note the earlier finish times on Wednesday 22nd December and also Christmas Jumper/Item Day on Friday 10th December; the letter I sent last week has all the information needed.

You will be pleased to know that following the half term break we have seen a decrease in the number of Covid-19 cases across the school and we hope this downward trend continues. As you will be aware a new variant has meant some changes. Currently secondary students and staff are expected to wear face coverings in communal areas unless they are exempt. These steps are in place currently.

Should staff or students be identified as a 'close contact' of the Omicron variant then they will be required to self-isolate for 10 days. NHS track and trace will inform close contacts if this is the case. I would ask that you inform the school as soon as possible if this applies to any students. I would be grateful if parents and carers of secondary students could continue to support us and ensure your child(ren) arrive to school with their face covering.

Year 11 are fast approaching their mock exams, which are very important at all times, but especially now in the light of the cancellations of GCSE exams in the summer. We wish them well in their mock exams; I am sure they will do very well.

Finally, please ensure you continue to support your child(ren) in attending school every day and on time. We are seeing the benefits of students attending school more regularly and, given the time they have missed due to the pandemic, it is more important than ever we work together to ensure attendance is excellent for all students.

Best wishes

Mr I Critchley
Principal



SUBJECT IN THE SPOTLIGHT: MATHS (PRIMARY)

Each issue there will be a focus on excellent examples of work in both primary and secondary phase.

Primary Maths lessons usually begin with an interesting and engaging problem to solve. Student talk is encouraged at every opportunity, enabling peer support, challenge and/or refinement of ideas. The class spend a significant length of time reflecting on their own and others ideas: they do this through journaling and exploring the thinking of others as presented in the textbook. Towards the end of each lesson, the children practise what they have learned, usually through a number of examples guided by the teacher and ultimately, independently.

Nursery: Numbers

Students have been counting out amounts of numbers, doing number hunts and matching, singing 5 currant buns and talking about taller and shorter to strengthen their Maths skills.



Reception: Number/Numerical Patterns

Students have been learning to subitize up to 5. The children were able to record the amount that they could see by writing the numbers.

During continuous provision, Sadie asked if we could play a game in the Maths area. Sadie chose this game and we worked together to play. I explained to Sadie that you had to read the number and then build a tower with the same amount of cubes. Sadie was very accurate when counting out the cubes, she was able to recognise most of the numbers when she first looked at them. I encouraged Sadie to use the number line along the bottom to count along until she found the number that she was uncertain of. When Sadie did this she was able to figure out the numbers 5 and 9. Sadie was able to show me the number 3 on her fingers. When I asked her how many cubes would you need in this tower? When it came to building a tower of five cubes Sadie put a cube on each of her fingers on one hand and told me 'I have five fingers so I know this is five cubes' Well done Sadie, fantastic counting and perseverance even when it was a little bit tricky!



SUBJECT IN THE SPOTLIGHT: MATHS (PRIMARY)

Year 1: Maths

In Maths we have started the new mastering number lessons. Over the last few weeks we have been mastering the number 5, looking at number bonds to 5 and finding 5 within other numbers.

We have looked at greater than and less than.

We have been using part whole models to add numbers together. We know that a part and a part make a whole. Part whole models can also help us to write fact families. We have been focusing on numbers up to 10.



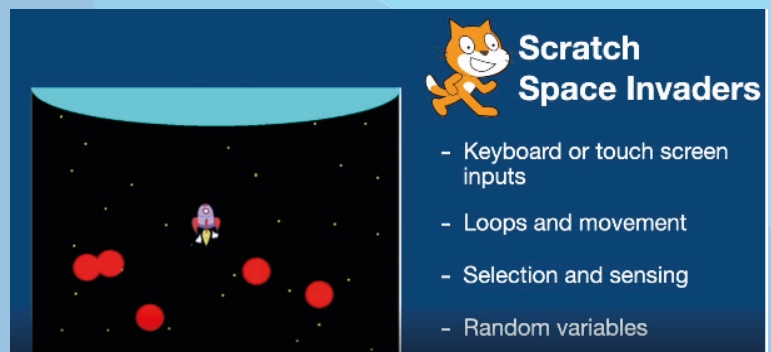
Year 2: Journals

In Year 2 we have been developing our journal skills looking at addition and subtraction.

Year 6: Using our Maths Skills

We have been using our Maths skills in Computing. Programming the mini sphere to play football and writing an algorithm for our own space game.

In Year 6 we have been visited by teachers from the Maths Hub. They loved our perseverance and they were particularly impressed with our oracy skills and the way we worked collaboratively on a problem, leading to a deeper understanding of the mathematical concepts.



SUBJECT IN THE SPOTLIGHT: MATHS (SECONDARY)

Each issue there will be a focus on excellent examples of work in both primary and secondary phase.

In Year 7, students have started work on Algebra. They have soon discovered it is not as difficult as first thought, they have persevered and been resilient in lessons. Keep up the hard work Year 7!

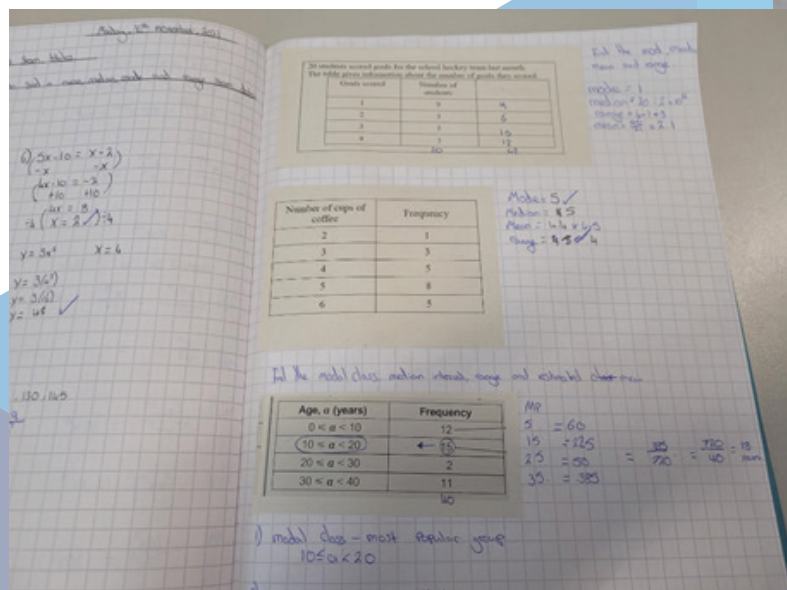
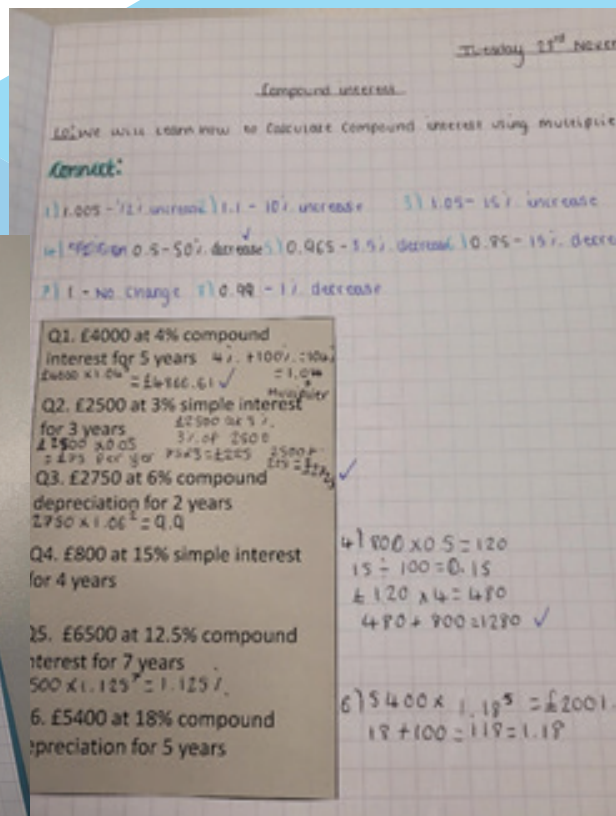
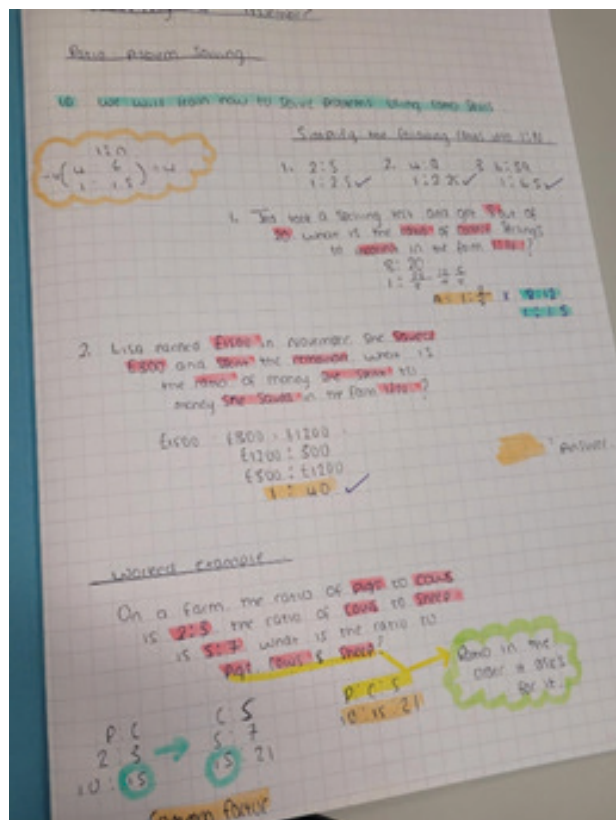
Year 8 and 9 have been developing their statistic skills, looking at data collection and how they can use statistics to analyse data and draw conclusions from data sets. A great example of cross curricular work linking into Science and English.

Year 10 students have now started unit 4 of their GCSE course and have been looking at percentages with a particular focus on interest rates, mortgages and finance. A great example of everyday Maths!

Year 11 students have been working hard in preparation for their mock exams. Saturday school has been a success and all students in lessons are concentrating on their exam techniques. Keep it up Year 11!

Finally, a congratulations to all our Hegarty users. We have managed to answer 27831 questions in the first half term, the second highest amount within the Wade Deacon trust. Can we hit 60000 by Christmas? Remember Hegarty is set for all students each week.

Keep an eye on the display in the Maths wing, if your name is on there in the last week of term a prize will be coming your way!



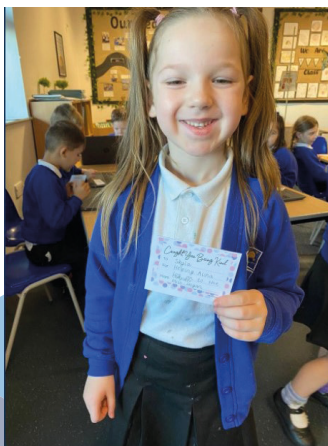
YEAR 6 BRITISH SIGN LANGUAGE

On Monday 15th November, Year 6 students took part in a fantastic workshop looking at British Sign Language. Students learnt lots of different signs, including the alphabet, animals and 2 different songs.



ANTI-BULLYING WEEK

Week commencing Monday 15th November saw students raising awareness for Anti-Bullying Week and the importance of 'One Kind Word' and how this relates to creating an anti-bullying culture in school. On Friday 19th November, students wore odd socks to celebrate Children In Need.



SPORTING FIXTURES

A couple of weeks ago, the Year 7 Football squad travelled to Wade Deacon to represent The Grange at the Year 7 Halton Football Tournament. All of the boys were brilliant and played extremely well.

During the group stages we had most of the possession and played the matches in the opposition's half. The game resulted in three matches drawn 0-0 and us going to a penalty shoot-out to decide group progress.

Unfortunately, The Grange squad were beaten on penalties sending them into the runner up final where they eventually managed to bag a goal and victory. It was fantastic to end the competition on a positive note, but the team reflected on what might have been with a single goal during the group stages. I'm sure they will learn from the experience and be ready for their next challenge. Well done!



Attendance at after school clubs has really improved and our girls Netball team are starting to make good progress with their skills. There are matches organised versus Sandymoor Ormiston Academy next week and then again the week after. Well done everyone!



WORD OF THE WEEK

Each week, we look at a high-frequency, useful word (which may be difficult to interpret) and explore the definition, sounds, spelling, word-families, grammar and history surrounding it.

How you can help:

Encourage the use of the word in speaking and writing; model the use of the word when you talk.

PRIMARY

VAST (adjective)

of very great extent or quantity; immense

COMPARE (verb)

estimate, measure, or note the similarity or dissimilarity between things

SECONDARY

Demonstrate

give a practical exhibition and explanation

Synonyms: Exhibit/display/show/exemplify

EMOJI BOOKS

Can you guess the name of this well know children's book from these emojis?



CHRISTMAS HAMPERS

Our Cross-Phase Student Leadership Team would like to ask for your support in making donations towards our Christmas Hampers. Collection boxes will be set up in the main reception area to receive donations. We have allocated different items to each key stage to ensure we have a good variety in each hamper. Students wanted to make it clear that there is no pressure to donate, but any items would be gratefully received.

CHRISTMAS HOLIDAY

All students have received a letter outlining our plans for the end of term.

On Friday 10th December, students can wear a Christmas item with their usual school trousers/skirt. It will also be Christmas Dinner Day.

School closes on Wednesday 22nd December and will reopen on Wednesday 5th January 2022.

CHRISTMAS HOLIDAY INFORMATION

10TH DEC
WEAR A CHRISTMAS ITEM

CHRISTMAS DINNER DAY

22ND DEC
SCHOOL CLOSES

ALL STUDENTS WILL BE BRINGING HOME A LETTER REGARDING CHRISTMAS HOLIDAY ARRANGEMENTS.

PLEASE ENSURE YOU ARE AWARE OF THE FINISH TIMES:

NURSERY: 11:30AM
SECONDARY: 12:05PM
PRIMARY: 12:15pm

ASPIRE FOR EXCELLENCE

ASPIRE FOR EXCELLENCE

WE HAVE ALLOCATED DIFFERENT HAMPER ITEMS TO EACH KEY STAGE:

<p>EYFS & KEY STAGE 1:</p> <p>TEA COFFEE HOT CHOCOLATE MARSHMALLOWS LONG LIFE MILK BISCUITS</p>	<p>KEY STAGE 2:</p> <p>SAVOURY SNACKS CRACKERS (SAVOURY) TINNED CARROTS TINNED PEAS CRANBERRY SAUCE STUFFING</p>
--	---

THEGRANGEACADEMY.CO.UK

CROSS-PHASE STUDENT LEADERSHIP PROJECT

ASPIRE FOR EXCELLENCE

WE HAVE ALLOCATED DIFFERENT HAMPER ITEMS TO EACH KEY STAGE:

<p>KEY STAGE 3:</p> <p>SWISS ROLL STOLLEN CUSTARD MINCE PIES CHRISTMAS PUDDING CRACKERS (TO PULL AT THE TABLE)</p>	<p>KEY STAGE 4:</p> <p>SELECTION BOX BREAD SAUCE AFTER EIGHT MINTS GRAVY PICKLED ONIONS</p>
---	--

THEGRANGEACADEMY.CO.UK

CROSS-PHASE STUDENT LEADERSHIP PROJECT

CAREER OF THE WEEK

Career of the Week : NURSING

Overview

Adult nurses work in the health sector and are trained to look after patients aged from 18 years old and upwards. They take responsibility for the general welfare and condition of their patients, and are also responsible for providing advice and support to a patient.

What would I do?

- Checking a patient's medical history and preparing a care plan
- Checking a patient's blood pressure and temperature
- Observing and recording changes in a patient's condition
- Giving medication and changing dressings
- Assisting surgeons and other healthcare professionals by preparing and passing instruments in an operating theatre
- Running clinics for people with conditions such as asthma and diabetes
- Caring for patients in their homes

Key Skills Required:

Decision Making	Initiative
Interpersonal	Managing Risk
Motivating People	Prioritising
Communication	Leadership
Written Communication	Teamwork



To do this kind of degree you will usually need at least five GCSEs at grades A to C (9-4 in the new system), including English, maths and a science, and two or three A-levels including at least one science or health-related subject. (Please check each university for their specific course entry requirements)

Top Related Jobs:
Dental Nurse, Midwife,
Doctor, RAF Nurse

UK Average Salary

£28,746

Source: NHS AFC
Banding 2018

Starting Salary

£22,128

Source: NHS AFC
Banding 2018

Top Tips!

As well as achieving the relevant qualifications, there are other things you can do to improve your chances of success when applying for this position.

- Try to get a relevant work experience placement
- Show a willingness to learn by volunteering
- Do your own research into jobs similar to nursing

Routes in...

You are likely to need at least TWO (usually THREE) A Levels plus a Nursing Degree at various universities

STAFF PROFILE H EVANS (ENGLISH TEACHER)

Education

St Peter and Paul Catholic College - GCSEs & A Levels
Sheffield Hallam University - BA Hons Degree - English Language
The University of Chester - PGCE

Previous Employment:

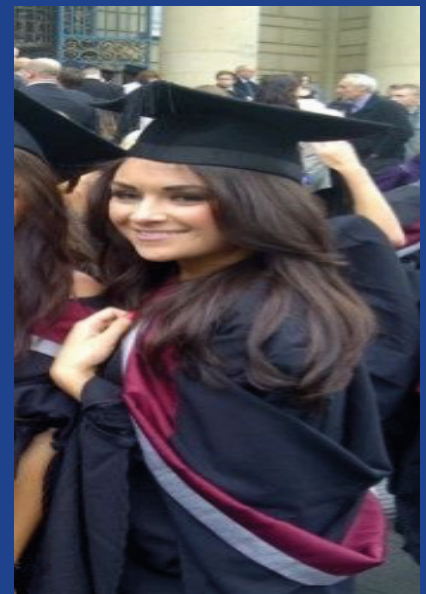
Local Pub - Waiting on/Bar staff
Asbestos Removals
United Utilities

Interests and hobbies

Spending time with my family, going to the gym, meals out with friends, and reading a good book!

Proudest Moment

Going back to University to earn my PGCE after having my daughter.



SAFEGUARDING, EMOTIONAL WELLBEING AND MENTAL HEALTH

MENTAL HEALTH

IS...

- Important
- Something everyone has
- Intrinsically linked to (+ probably inseparable from) physical health
- On a continuum
- Worth making time for
- Part of being human
- Something we need to look after
- Positive + Negative
- Changeable
- Complex
- Real

ISN'T...

- A sign of weakness
- Shameful
- All in your mind
- Always something negative
- Something you decide to have
- Something to think about only when it feels broken
- An interchangeable term with mental illness
- Feeling good all the time
- Something you can snap out of
- Fixed
- Fake news

ONLINE SAFETY



KIDS UNITE

Dealing with bullies and trolls

It's time for kids to unite, to recognise mean behaviour both online and offline and do something about it. It's time to pick one another up and let each other know how important you are. 'Own It' is a BBC website which has advice and tips on how to spot bullying behaviour, support your friends and get help when you need it.

There are lots of resources, videos and even quizzes you can complete online here: <https://www.bbc.com/ownit>

OWN IT

- The Basics
- Take Control
- It's Personal
- Don't Panic
- About Us

Quizzes and videos include:

- Quiz: How do you help your friends against bullying?
- Quiz: Is what you're posting online mean?
- What are the nicest and nastiest comments you've seen online?
- Being bullied? Five things you need to do RIGHT NOW
- "THE GROUP CHAT HAS TURNED NASTY"
- Five things to ask yourself before you post
- We asked you - why do people bully?
- We got your thoughts on asking for help with bullying

WELLBEING QUOTE



Nurturing yourself is not selfish... it is essential to your survival and your well-being

TOP TIPS FOR 11-19 YEAR OLDS

The internet is a brilliant place to connect with others, to be creative and to discover new things.

Protect your online reputation
Use the services provided to manage your digital footprints and 'think before you post.' Content posted online can last forever and could be shared publicly by anyone.

Know where to find help
Understand how to report to service providers and use blocking and deleting tools. If something happens that upsets you online, it's never too late to tell someone.

Don't give in to pressure
Keep calm and keep in control; once you've pressed send you can't take it back.

Respect the law
Use reliable services and know how to legally access the music, film and TV you want.

Acknowledge your sources
Use trustworthy content and remember to give credit when using others' work/ideas.

SAFEGUARDING, EMOTIONAL WELLBEING AND MENTAL HEALTH

HALTON HAVEN HOSPICE



Halton Haven Hospice Creativity Workshops For Bereaved Children

Watercolour | Calligraphy | Storytelling

Tailored Yarn Memories
Will be holding children's creativity workshops at Halton Haven Hospice throughout November and December

Please let them know if your children would like to attend.

Children will be encouraged to explore creatively and help design a greetings card to raise Hospice funds.

Please email community.engagement@haltonhaven.co.uk or call 01928 712728 to find out more.

Halton Haven Hospice are providing creative workshops for bereaved children. If you are interested in finding out more information please see contact details attached to the image.

If you are looking for some advice about your child and would like to remain anonymous, you can contact the details below or use the QR code to access more information.

CHAT HEALTH HALTON



ChatHealth HALTON

NHS Bridgewater Community Healthcare NHS Foundation Trust

NEED ADVICE ABOUT YOUR 5-19 YEAR OLD?

TEXT YOUR SCHOOL NURSE ANONYMOUSLY ON 07480 635988

Can I have some advice please?

Thank you for texting the School Nursing Team. We can help with your child's general health, development and wellbeing including:

- Emotional Wellbeing
- Keeping Safe & Healthy
- Bedwetting
- Sleep
- Bullying
- Behaviour
- Nutrition
- Sexual Health
- Gender Identity
- Medical Conditions in School

How can we help?

We might inform someone if we were concerned about your safety but we would usually speak to you first. Your messages are stored and can be seen by other healthcare staff who follow the same confidentiality rules. We aim to help you within one working day, and you should get an immediate message back to confirm we have received your text. Texts will only be seen between 9am and 5pm. If you need help before you hear back from us contact your GP or dial 111. Our text number does not receive voice calls or MMS picture messages. We

THE EDUCATION HUB

There has been coverage in the media of teachers and other school and college staff receiving abuse on social media platforms including TikTok and Instagram.

Within this link there are facts about what online abuse is, what schools can do to tackle it, and what the government are doing to support them:

<https://bit.ly/3FNVzAQ>



HOW SCHOOLS AND PARENTS CAN SPOT AND TACKLE ONLINE ABUSE OF TEACHERS

Department for Education

SCHOOLS DIRECT: WADE DEACON TRUST

TEACHER TRAINING PROGRAMME

School Direct: What is it?

School Direct is an innovative training route which allows you to choose the school in which you train. Wade Deacon Trust offers the non-salaried School Direct Training Programme for both Primary and Secondary years.

This is open to all graduates who possess a good quality degree in a National Curriculum or relevant applied discipline, plus Grade C/4 or above in GCSE (or equivalent) English and Maths (Science also required for Primary applications). You will pay tuition fees and may be eligible for a bursary from the Teaching Agency.

Why Choose School Direct at Wade Deacon?

This exciting programme enables you to work within a school and train in the classroom supported by qualified teachers and mentors. You will also spend a number of days studying at University of Chester as you progress towards Masters level credits.

We pride ourselves in offering high quality, personalised teacher training. Trainees, or Associate Teachers as we prefer new our colleagues to be called, will experience the very best of teaching and learning, whilst also being given the opportunity to experience teaching in a range of different educational settings.

Your placement will be in one of our Alliance Schools. Therefore, it is important that you are willing and able to travel to different schools within our Alliance, enabling you to experience schools of contrasting natures. You will also gain 6th form, Primary/ Secondary and SEND experience.

Employment Rates:

We are proud to have well above average employment rates for our Associate Teachers, many of whom secure positions within our Trust or Partner Schools. We are proud to offer a fully supportive recruitment scheme, offering opportunities such as mock interviews and application letter writing, as part of our programme.

PGCE Core

Where capacity allows, we are also willing to host PGCE Core students within certain subjects. All placements will be undertaken following the guidelines of each trainee's University, and Wade Deacon will provide the support of a Subject Mentor and a Professional Mentor. Where suitable, PGCE Core trainees will be able to access the Professional Development programme which is run in house.

* Please be aware that you will be expected to arrange your own transport to different placements.

Any further questions?

Please contact us using the form below or email schooldirect@wadedeacontrust.co.uk

Alternatively you can contact Jane Goulding direct on 0151 458 3400 Ext: 1002



THE GRANGE ACADEMY VACANCIES

ASSISTANT PROGRESS LEADERS

We seek to appoint committed and dynamic Assistant Progress Leaders to join our dedicated team of support staff. The successful candidate will work under the direction of the Progress Leader and will contribute to ensuring the highest possible standards in pastoral support to our Secondary students.

Location

The Grange Academy

Salary

NJC Scale 5, points 12 - 17 (actual salary £19,537 - £21,371)

Employment type

Full time

Contract Type

Permanent and Temporary

Closing date for applications

Wednesday 5th January 2022 at 9am

Send applications to

hr@thegrangeacademy.co.uk

Interview Date

Week commencing 10th January 2022

Start Date

ASAP

Further information

We welcome informal visits from all applicants before they apply. If you wish to do so, please contact hr@thegrangeacademy.co.uk to arrange an appointment

Our school is a supportive and rewarding place to work. We can offer the successful candidate an opportunity to work with highly trained and supportive staff, as well as a whole school commitment to professional development. A comprehensive programme of CPD supports colleagues at all career stages; through the Teaching School and the Multi-Academy Trust we provide excellent career opportunities for our staff. Colleagues seeking a varied, challenging and rewarding career can find this in the Wade Deacon family.

Full details of the post, including the job description and how to apply are available in the job pack on the website:

<https://www.wadedeacontrust.com/work-with-us/vacancies/assistantprogressleaders/>

OTHER VACANCIES:

- CASUAL MIDDAY ASSISTANTS
- CASUAL EXAM INVIGILATORS

For more information and to receive an application pack, please contact school on 01928 562660 or visit our website: <https://www.thegrangeacademy.co.uk/>