

The cover features a large white circle with a black outline on the right side. Inside the circle, the text 'GCSE KNOWLEDGE ORGANISER' is written in a bold, black, sans-serif font, arranged in three lines. Below this, 'ART & DESIGN' is written in a smaller, black, sans-serif font. The background is a light green color with abstract geometric shapes and patterns of parallel lines in various shades of green. A small green circle is positioned at the bottom of the large white circle.

GCSE
KNOWLEDGE
ORGANISER

ART & DESIGN



Assessment Objectives	
AO1	Develop ideas through investigations, demonstrating critical understanding of sources.
AO2	Refine work by exploring ideas, selecting and experimenting with appropriate media, materials, techniques and processes.
AO3	Record ideas, observations and insights relevant to intentions as work progresses.
AO4	Present a personal and meaningful response that realises intentions and demonstrates understanding of visual language.

Understanding the assessment objectives set by AQA:

These are vital to consider and we will approach each project step by step from A01-4.

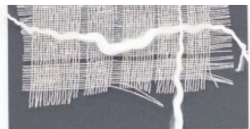
Vocabulary		
AO1	Critical Understanding https://www.bbc.co.uk/bitesize/guides/zwk82nb/video	Looking closely at how artists and designers communicate ideas, feeling and beliefs through their work. Your knowledge of the work of others should help you to develop your ideas, and this influence should be clear in your art.
AO1	Sources https://www.bbc.co.uk/bitesize/guides/z2hp3k7/video	This is what inspires your art. The work of artists, the built environment, the natural world, music, literature, history, religion, traditions, politics etc.
AO2	Refine https://www.bbc.co.uk/bitesize/guides/zymtv9q/video	Making small improvements to your work after evaluating. Experimenting with different materials and techniques appropriate to your idea as your work progresses.
AO2	Media	Materials used to create a work of art.
AO2	Techniques	The way you use media.
AO2	Processes	The way you do something.
AO3	Record https://www.bbc.co.uk/bitesize/guides/z8sv97h/video	Capturing your ideas (drawings, photographs, sketches, collected images, objects, materials, annotation)
AO4	Personal Response	Belonging to or affecting you rather than anyone else. How you feel about your artwork.

The first table outlines each assessment objective and the second talks through key words used by exam boards that can often be tricky to understand.

The links will take you to BBC bitesize which is a great resource for exploring key terms.



AO1 EXPLORE ANNOTATE BEGIN TO LINK A THEME IMAGES TO YOUR CHOSEN ARTISTS WORK WRITTEN ANALYSIS LINK ARTISTS WORK TO IDEAS AND ARTWORK ARTISTS RESEARCH



Sources of inspiration:

- Online Resources
- Local Galleries
- Internal/External spaces
- Conversations with family members/friends about your theme.
- Photography (primary research)
- Books
- YouTube (TATE/MOMA)
- Films/Documentaries

Key Tasks:

- Title page
- Mind-map
- Research (primary and secondary photographs).
- In depth Artist Research (3x minimum per project).
- Written evidence.

After finding a source you could:

- Complete a sample, using your source as inspiration.
- Do some initial idea sketches, using your source as inspiration.
- Compare 2 different sources in your sketchbook using a VEN diagram.

How to Analyse an Artist:

- Introduce the work of the artist (**key facts only**), **how** does their work fit and inspire your project/theme?
- Are there any social, environmental, moral, issues surrounding your artists work?
- Consider **what** key features appear regularly in your artists work, **why** might that be?
- **What** colours do they use a lot of? **What** effect does this give?
- **Who** do you think the work is aimed at? **Why**?
- Explain what you like / dislike about the work and **why** that is.
- **What** techniques has the artist used? **Why**? Could different techniques be used to create different effects?
- **How** will this artist inspire your work? **How** does the artist fit into the theme? **What** techniques will you sample? **Why**?

It can be really useful to put your thoughts into writing in order for you to process where you want your project to go, what are your intentions why do you want to make work on a specific theme, what do you want the audience to think/know/feel?



A02 EXPERIMENT WITH A RANGE OF MEDIA

LINKING TECHNIQUES TO ARTISTS AND THEMES

TEXTILES OF MEDIA

CLAY MIXED MEDIA PHOTOGRAPHS OIL PASTEL

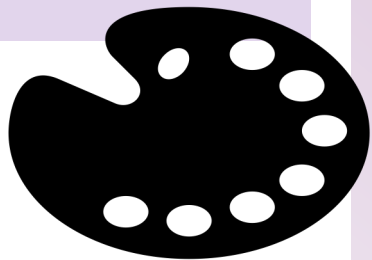
DRAWING WATERCOLOUR PEN AND INK



What do I do to meet the assessment objective?

- Use the words in the assessment objective to help you understand what it is you should do:
- **Refine work:** Quality over Quantity! – Refine work by going back to old samples and developing them to make them better. Refine work by comparing samples and evaluating to see what works and what doesn't.
 - **Explore Ideas:** This can be as a sketch or a sample, try to create the idea in your head – it doesn't matter if it doesn't work – it's a sample!
 - **Experimenting with appropriate media, materials and techniques** – practice creating samples using a range of different techniques, make sure you know how to them using the correct materials. Don't be afraid to experiment and combine different techniques to see what effect they give! – Think outside of the box.

- Key Tasks:
- Observational Drawing
 - Experimentation
 - Explore
 - Try out
 - BE PREPARED TO FAIL!



- In order to evidence development you could:
- After completing a sample or experiment cut it in half (or photocopy) develop one side of the experiment or idea further.
 - Sketch an idea to explain how the experiment would or could be used in a more refined piece of work.
 - Evaluate your experiment; what went well? Even better if?



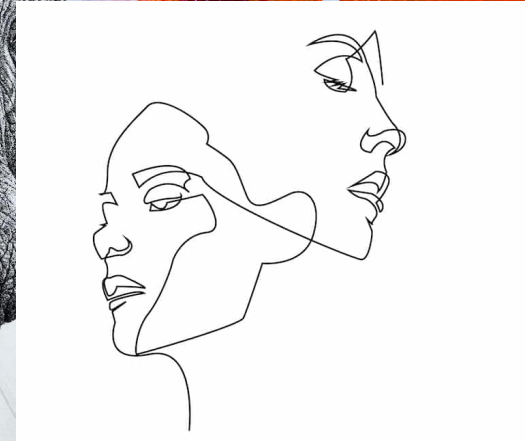
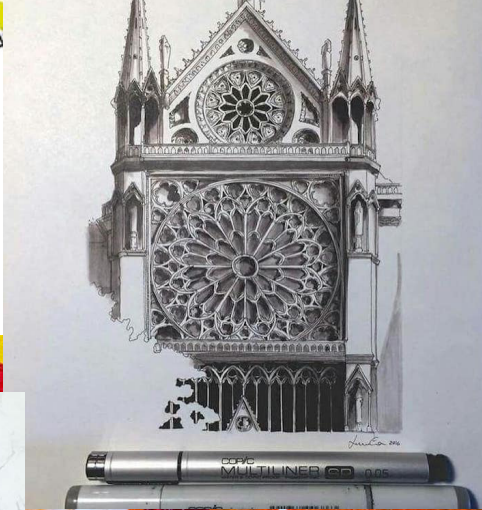
○ EXPERIMENTING:

DRAWING METHODS/IDEAS:

- Observational drawing
- Jotting
- Enlarged
- Miniature
- Timed drawing
- Line drawing/ single line drawing
- Tonal drawing
- Perspective drawing
- Illustration
- Cartoon drawing
- Pointillism
- Doodling
- Architectural drawing
- Hypo realism
- Surrealism
- Anamorphic drawing
- Fashion illustrations

MATERIALS/PROCESSES:

- Painting
- Drawing
- Sewing
- Stitching
- Assembling
- Collage
- Printmaking
- Inking
- Pastels
- Stencilling
- Weaving
- Cutting
- Sticking
- Charcoal
- Sculpting



A03 IDEAS

IDEAS LINKING TO ARTISTS WORK
 ALL ARTWORK LINKING TOGETHER
 PLANS, DESIGNS IN A RANGE OF DIFFERENT MEDIA

OBSERVATIONAL DRAWINGS
 PLANS
 EXPLANATIONS
 ANNOTATION

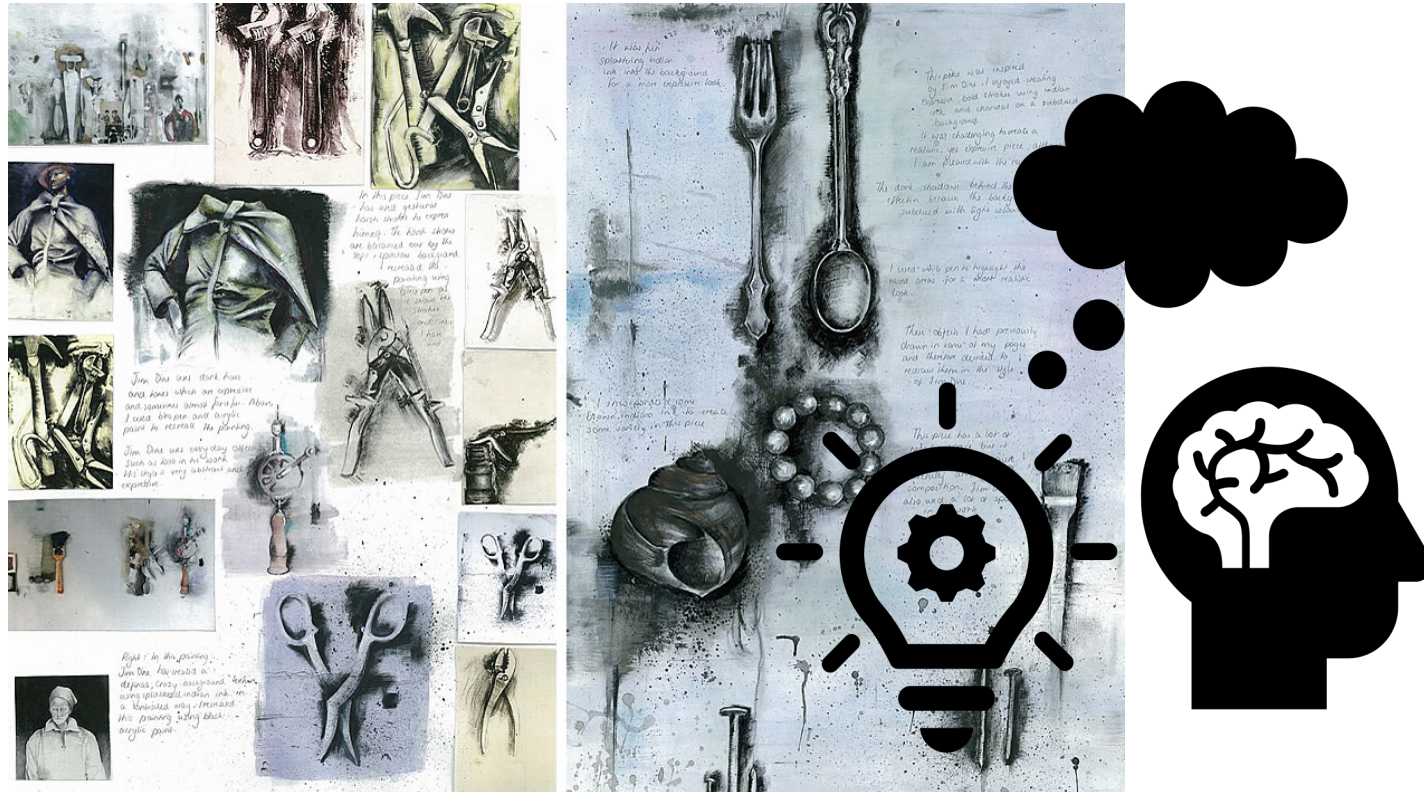
Key Tasks:

- Design ideas
- Mock-ups
- Drawing/Sketches
- Artist research
- Evaluating
- Written work

How can I record my ideas?

Recording ideas is really important to show your teacher and the examiner your thought process and development. Here are some ways you can record ideas:

- **Design Ideas** – Draw out your design ideas, they should be clearly inspired by your samples or sources. Annotate these to explain parts of your designs
- **Observational drawing** – Sketching objects that relate to your theme can help inspire design ideas – especially when creating patterns
- **Take photographs** – take photos of sources for inspiration or take process photos when you are making samples as evidence.
- **Annotation** – Annotation, ensure you annotate to explain your thoughts, this does not need to be a lot of writing, sometimes you might just bullet point!



AO4 FINAL

MEANINGFUL PIECE OF WORK
INFORMED SHOW UNDERSTANDING
RESPONSE LINKS
LINK BETWEEN VISUALS AND ARTISTS WORK
PRESENTATION TO ARTISTS WORK
RELEVANT

- Final piece: a resolved artwork that represents your projects journey.



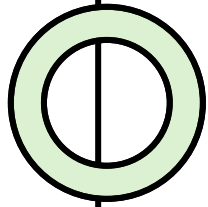
How can I meet this Assessment objective?

Use the words in the assessment objective to help you understand what it is you should do:

- **Personal and meaningful response** –Your response to a source should be personal to you. What your feelings and reactions are. It must be meaningful by relating to your source inspiration. Make sure everything links and is not random.
- **Demonstrates understanding of visual language** – being able to combine different textures, colours, techniques in an aesthetically pleasing way.
- **Aesthetics** – the way things looks

How to create a unique and personal response:
Create and develop your own designs, look into and research things that YOU are passionate about and inspired by.



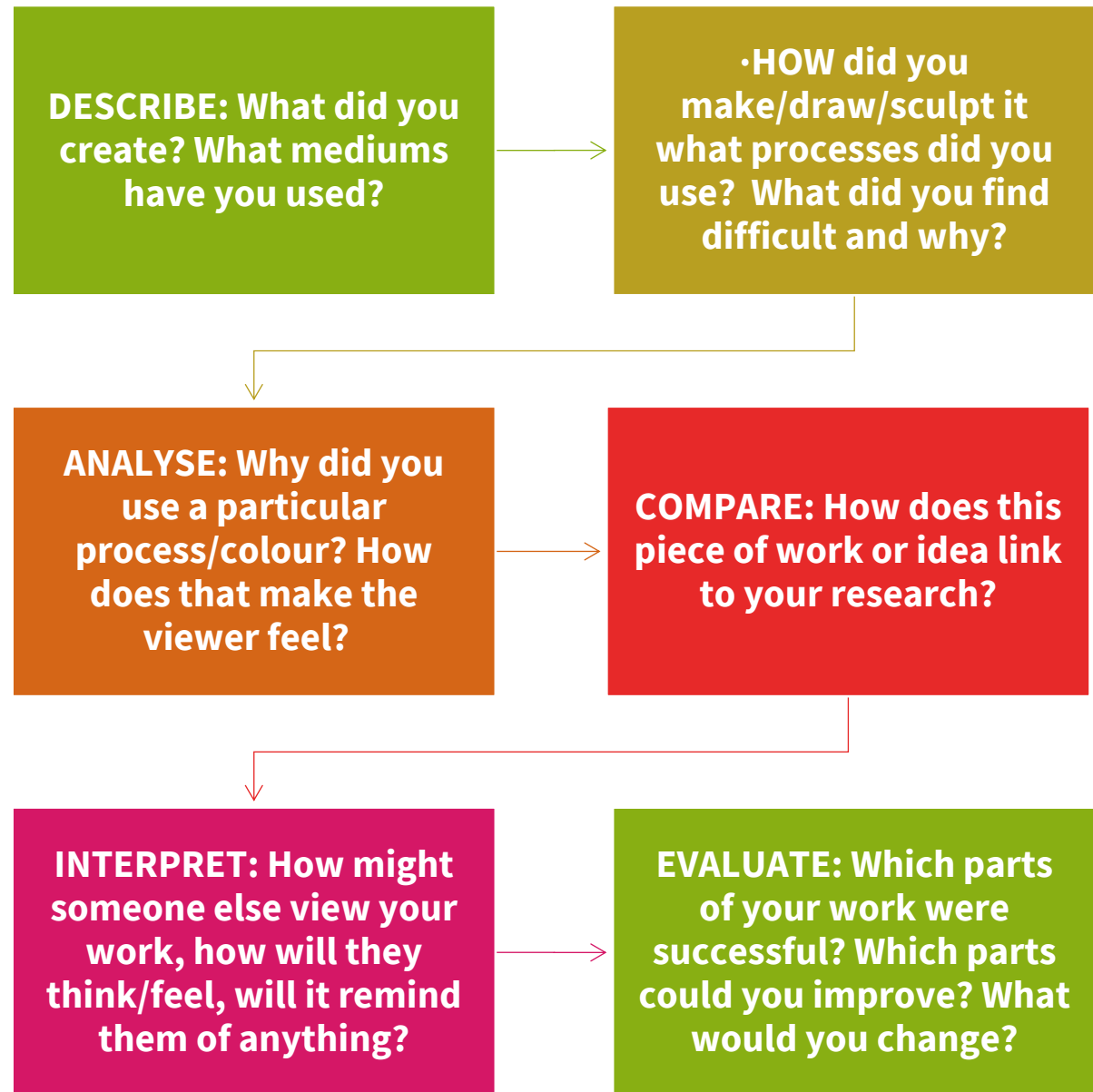


ANNOTATING YOUR WORK:

Annotations are really important explaining how and why, shows the viewer/teacher/examiner that you have understood the task, It will help you to learn how to analyse your ideas and make good decisions in your artwork. The thoughts that you have in your head and the words you frequently say in lessons are valuable and should be recorded!

You will gain marks for your annotations!

The flowchart gives you prompts on how to annotate successfully.





PRESENTATION

Consistency

Each page should be presented to the same standard, and be titled clearly, you should consider what backgrounds/titles

images are most fitting.

Imagination

ALWAYS be creative and utilise your imagination!

We don't want to see any boring pages they should be bursting with life.

Pride

Take pride in your art work and hand writing, ensure work is mounted neatly.



○ BE A REFLECTIVE LEARNER ASK YOURSELF:



- Have I completed enough research surrounding my project theme? And is the research from a number of sources (primary and secondary research)? Is the research relevant?
- Have I included purposeful written evidence? Is any downloaded text from the internet relevant? Have I thought about, commented on and evaluated my work so that anyone looking at my portfolio will understand the decisions I have made?
- Have I explored a range of materials/processes? Or do I just stick to one medium? i.e. painting/pencil drawing.
- Have I completed lots of drawings in the form of: sketches, plans, diagrams, doodles, etc? Have I shown the value and significance of my drawing activity?
- Have I formed connections between my work and that of other artists designers? (compare/contrast)
- Is there a clearly sustained project that shows a journey from a starting point to realised intention(s)? Is it personalised?
- Could another person looking at my work see evidence of reviewing, refining and selecting within the work? Is the work organised?
- Have I considered the best way to present my portfolio (including any sketchbook work, photographs, mounted sheets, models, samples, digital presentations, records of visits or workshops as well as final outcomes? Is the quality of my presentation consistent?



○ LINKS TO USEFUL RESOURCES

TATE:

<https://www.tate.org.uk/art>

<https://www.tate.org.uk/art/art-terms>

<https://www.youtube.com/user/tate/videos>

MOMA:

https://www.moma.org/learn/moma_learning/

<https://www.moma.org/artists>

BBC Bitesize:

<https://www.bbc.co.uk/bitesize/subjects/z6hs34j>

