

Time Signatures and Meters

How do you work out a time signature?

A time signature is a set of two numbers that tells us how many beats are in a bar and how that bar is divided.





The time signature tells us two things:

How many beats in a bar

4
4

Four crotchet beats per bar

What kind of beat you are counting

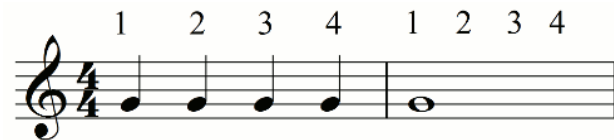
1		Semi Breve
2		Minim (2 beats)
4		Crotchet (1 beat)
8		Quaver (1/2 beat)

Time Signature

How is the beat divided?

4
4

Four crotchet beats per bar



3
4

Three crotchet beats per bar



6
8

Six quaver beats per bar

